

Catalog Number:	Project Name:	Note:	Date:	Type:
-----------------	---------------	-------	-------	-------

The LS1 series is a slim, light weight and energy efficient luminaire that is equipped with 0-10V dimming capability and a field-adjustable CCT and wattage selector.

The fixture includes standard surface mounting kit excellent for utility applications such as parking garage, warehouse, hallway, storage facility, restrooms and stairwell.



**CONSTRUCTION**

The luminaire features matte white finish and galvanized housing. T-bar mounting hole make it easy for installation, and multiple knock-outs provide options for occupancy sensor.

**OPTICAL SYSTEM**

Luminaire is built with the highest quality driver that is Universal Voltage (120V-277V), uses long lasting, high-efficient LED package.

**LENS**

Frosted lens diffuser reduces glare and improves overall light output.

**SENSOR READY**

Motion sensor and daylight harvesting sensor available, for factory installation.

**ENERGY SAVINGS**

Over 50% energy savings than traditionally fluorescent fixtures, low heat productions requires less maintenance and operation cost.

**LISTING**

UL Listed, DLC Premium Listed

**WARRANTY**

5 year Limited Warranty

	WATTAGE	DELIVERED LUMENS	EFFICACY
<b>4'</b>	25W/30W/40W	5200 @ 3500K	134 lm/W
<b>8'</b>	55W/60W/65W	8450 @ 3500K	132 lm/W

*Based on the highest wattage @ 3500K default setting, 80 CRI. Actual lumens may vary.*

**TECHNICAL SPECIFICATION**

CCT	3500K/4000K/5000K
CRI	80+
DIMMABLE	0-10V Continuous Dimming (10%-100%)
VOLTAGE	120V-277V
POWER FREQUENCY	50/60 Hz
POWER FACTOR	>0.9
THD	≤10%
WORKING TEMPERATURE	-40°F ~ 122°F
STORAGE TEMPERATURE	-40°F ~ 158°F
IP RATING	IP44, Suitable for damp locations
WARRANTY	5 year limited



ORDERING SAMPLE:

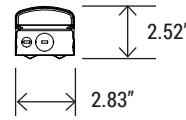
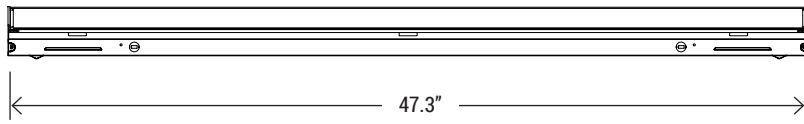
-  -  -  -  -

Series	Size	CCT/Wattage
PT-LS1 LED Linear Strip Luminaire	4F (4-footer)	3CP (3500K/4000K/5000K) (25W/30W/40W)
	8F (8-footer)	3CP (3500K/4000K/5000K) (55W/60W/65W)

Accessories/Options		
EM Battery	Sensor	Mounting
___ Blank PT-EMN-08W-050	___ Blank PT-MSH-PR MS-RC2 (Required)	___ Blank (Standard surface mount) A-CBL WG-LS1-4F
PT-EMN-15W-050		

Catalog Number:	Project Name:	Note:	Date:	Type:
-----------------	---------------	-------	-------	-------

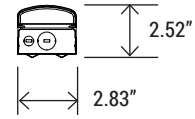
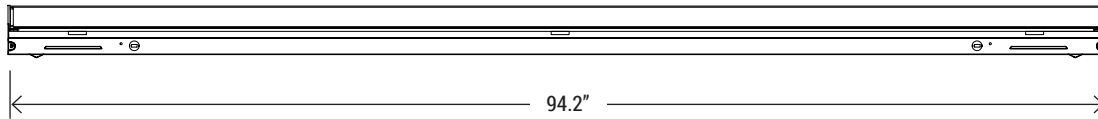
**DIMENSION**



QTY/BOX

**6**

**4'** PT-LS1 Series

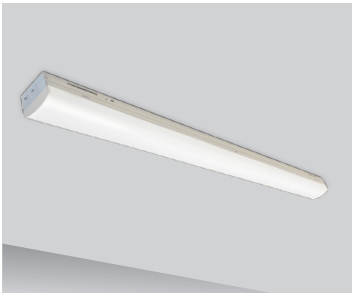


QTY/BOX

**6**

**8'** PT-LS1 Series

**MOUNTING OPTION**

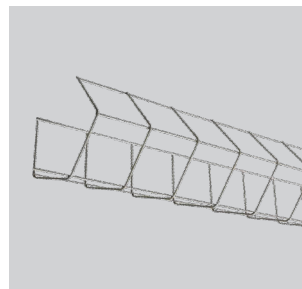


**SM**  
Surface mount (Standard)  
Comes with junction cover



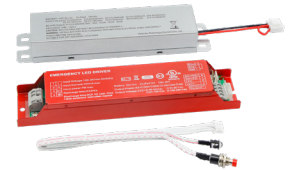
**A-CBL**  
Hanging wire for strip light

**WIRE GUARD OPTION**



**WG-LS1-4F**  
Wire guard for 4-ft LS1  
*(For 8-ft fixtures, two WG-LS1-4F are needed)*

**EM BATTERY OPTION**



**PT-EMN-08W-050 (4FT)**  
**PT-EMN-15W-050 (8FT)**  
LED Emergency Driver

**SENSOR OPTION**

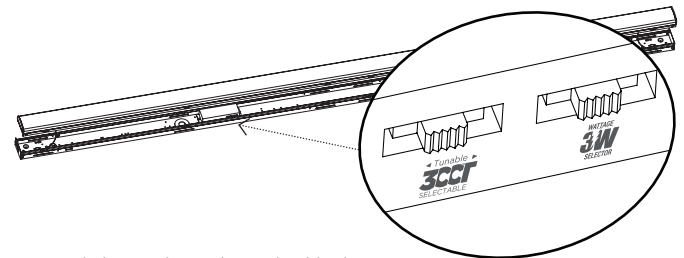


**PT-MSH-PR**  
Motion Sensor



**MSH-RC2**  
Intelligent Control Unit  
(Required)

**CCT AND WATTAGE SELECTOR**



- DIP switches are located onto the drive box.
- Select a wattage and color temperature by sliding switch left or right respectively to the desired value.